



*Annual Adopt-A-Plot Meeting*  
*January 27, 2018*  
*(makeup meeting - February 11, 2018)*



# AGENDA

- Changes to 2018 Agreement
- Gardener Playbook - NEW
- Metrics
- Looking Ahead





# WHY DO YOU GARDEN?

- Community, social, new friendships
- Help people in need
- Grow vegetables and fruits
- Learn organic gardening practices
- Outdoor, physical





# NOTABLE CHANGES

- Maintain a fully planted plot
  - Practice year-round gardening
  - Agree to photographs
- 
- Non-Compliance process: verbal, written warnings, plot revocation
  - Use appropriate communication channels in case of conflict



# GARDENER PLAYBOOK

- Fully plant year round
  - Primarily 4 planting cycles: late winter, spring, summer, and fall
- Warming temperatures have lengthened our growing season
  - New planting guide – updated dates for planting
  - List of vegetables Metrocrest's clients request





# GARDENER PLAYBOOK

## Winter gardening - your choice

- 1) Plant winter hardy vegetables, **and/or**
  - 2) Plant a suitable cover crop, **and/or**
  - 3) Top dressing of compost, leaves or composted goat straw to protect the soil **or**
  - 4) Clean out your plot and allow someone to foster it over the winter
- Must happen no later than October 15<sup>th</sup>
  - There is no option to leave a plot bare or with dead summer plants over the winter – possibly the plot will not be renewed the following year.





# GARDENER PLAYBOOK

## Winter Gardening

- The hard part - remove non-viable plants in the fall (by October 15)
  - Non-viable plants are summer plants (tomatoes, peppers, okra, eggplant, etc.) that will not be as productive as planting a fall crop
  - Consider: 1/4 lb. of peppers versus 2 – 4 lbs. of broccoli
- Late winter planting begins in February for a Spring crop





# WINTER GARDENING REFERENCE

## **Growing a Greener World - 2-part Episode/Year Round Gardening**

The show's creator has a large vegetable garden in Atlanta. The program airs on many Saturday mornings on KERA, but you can also just watch each episode thru the Internet:

<https://www.growingagreenerworld.com/episode-801-a-year-in-the-life-of-the-garden-farm-part-1/>

[Season Premier! Episode 801 - A Year in the Life of the ...  
www.growingagreenerworld.com](https://www.growingagreenerworld.com/episode-801-a-year-in-the-life-of-the-garden-farm-part-1/)

Growing a Greener World® TV's season premiere of season 8 goes behind the scenes for a year in the life at the Garden Farm set.

<https://www.growingagreenerworld.com/episode-802-year-life-garden-farm-part-ii/>



# GARDENER PLAYBOOK

## What Not to Plant

- Ornamentals – borders and end caps
- No corn, watermelon, pumpkins, Brussels sprouts, or kohlrabi, etc.
- If a gardener chooses to grow other items (i.e. their 20%), the plant's growth cannot take up more than 20% of their plot (i.e. shade out other crops)





# GARDENER PLAYBOOK

## Saturday Harvest

- If not able to attend, arrange a substitute
- If not present and GL not notified otherwise, mature produce may be harvested, if others are available to do so.
- Do Not Harvest List – revocable if not contributing or produce regularly spoils
- Gardeners need a buddy to harvest and water when needed





# GARDENER PLAYBOOK

## How We Grow

- Learn organic gardening practices
- No chemical insecticides, herbicides or pesticides
  - No Round-up, Miracle Gro or raw manure





# GARDENER PLAYBOOK

## Communication / Grievances

- Use of email allows for consistent messages to all
  - Check and READ your email - PLEASE!
- Grievance - attempt to resolve in person, not by email



Gardener to Gardener

Gardener to Garden Leader

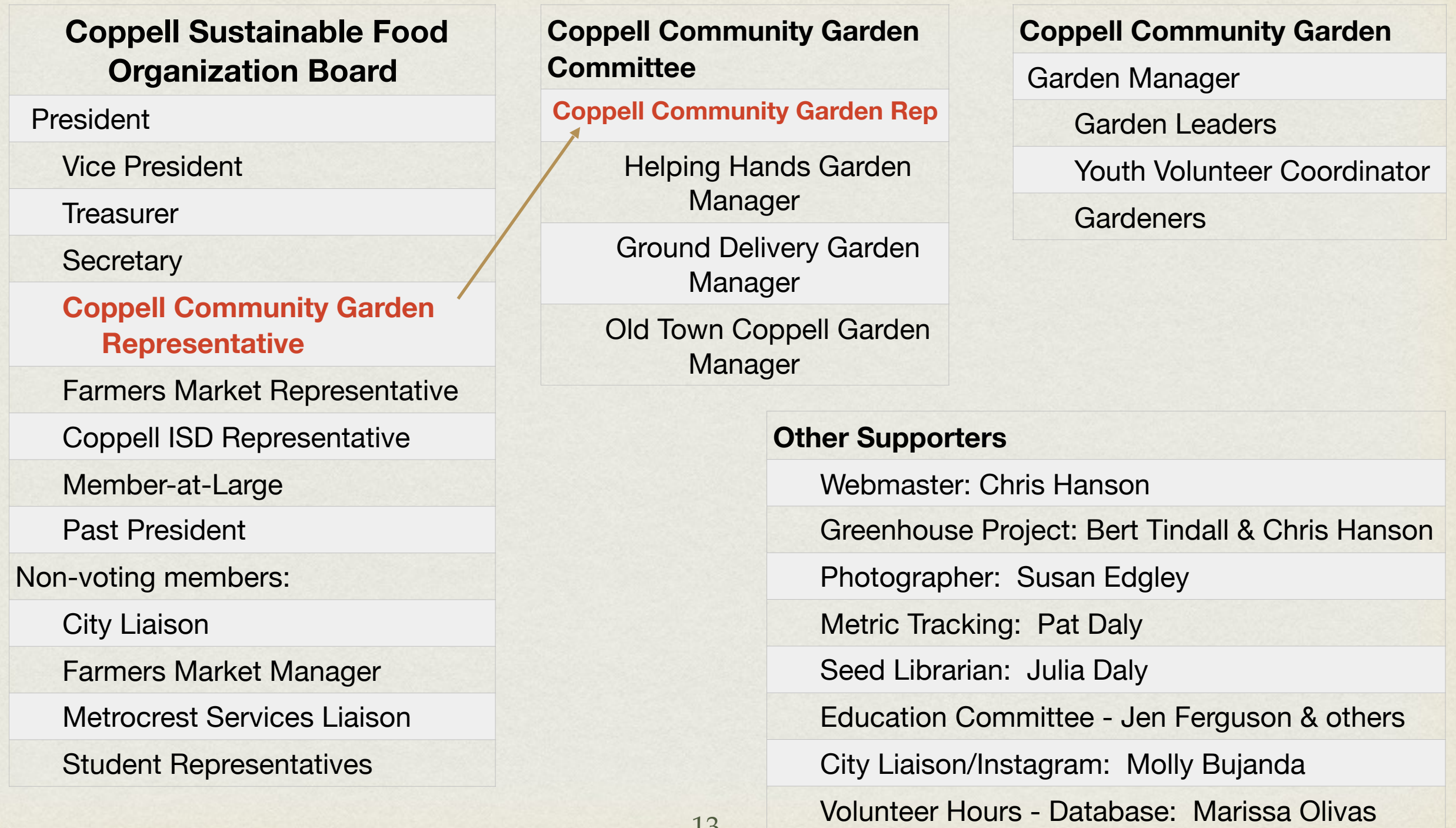
Gardener to Garden Manager

Gardener to Community Garden Rep on Board

Gardener to President of Board



# ORGANIZATION CHART





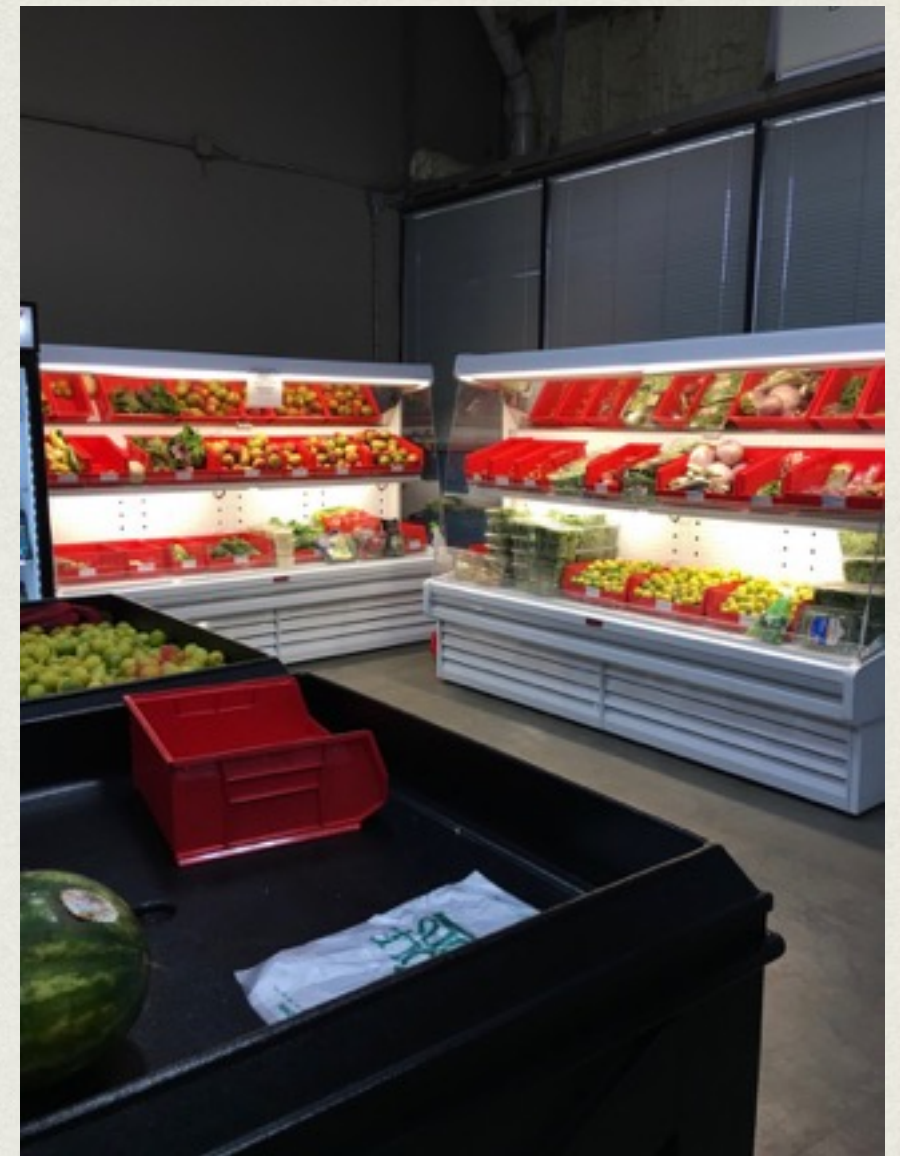
# SHARE THE HARVEST METRICS

Garden	2009	2010	2011	2012	2013	2014	2015	2016	2017
Helping Hands	4,843	3,988	4,957	4,772	4,311	4,263	4,074	2,804	3,905
Ground Delivery	9,589	9,760	6,367	7,846	7,147	6,479	9,577	9,026	8,486
Old Town									1,166
Total	14,432	13,748	11,324	12,618	11,458	10,742	13,651	11,830	13,557



# METROCREST SERVICES

- We are their produce department
- 1,200 sq. ft. pantry
- 250 families currently being served
- Tours offered twice a month -  
Thursday and Saturday
- Next tours are:  
February 3 & 15, 10am





# LOOKING AHEAD

- Goal Setting
- Garden goals
- Personal goals, track it, journaling, learn more
- Greenhouse update





# VOLUNTEER DATABASE

Why record volunteer hours?

- Used when applying for grants and when purchasing insurance
- How to track your volunteer hours?

<https://youtu.be/tK2fPlfG7pQ>

Molly Bujanda or Marissa Olivas, City of Coppel - [KCB@coppelltx.gov](mailto:KCB@coppelltx.gov), for issues regarding volunteer registration and logging hours





# QUESTIONS?



2018 - 20 YEARS !

[coppellcommunitygarden.org](http://coppellcommunitygarden.org)  
[info@coppellcommunitygarden.org](mailto:info@coppellcommunitygarden.org)  
[facebook.com/coppellcommunitygarden](https://facebook.com/coppellcommunitygarden)  
Instagram/coppell\_community\_garden



# THANK YOU FOR COMING!

